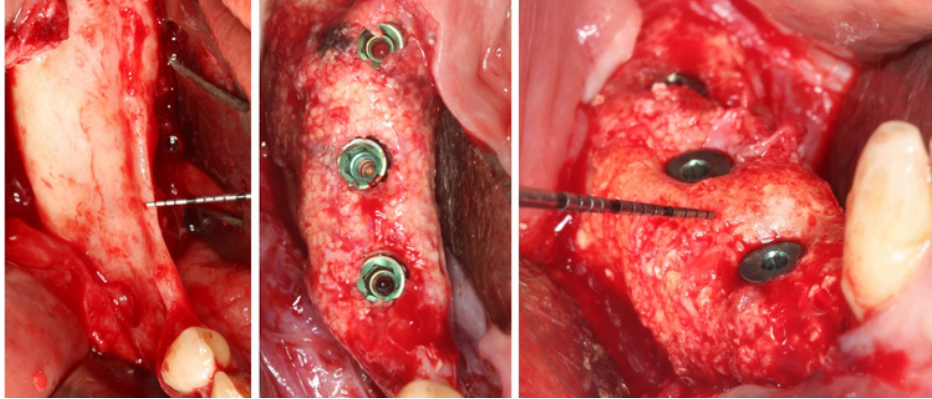


## Ridge\_3D Live Surgery Course Program



### Day 1

08 00 Theory: Established concepts and persistent controversies

09 30 Live Surgery: Lateral Ridge Augmentation with Collagen Membrane

12 00 Q&A

13 00 Lunch

13 30 Technical aspect: Flap design, reflection, and advancement. Tenting screws and membrane fixation. Intra-oral bone harvesting.

15 00 Hands-on, animal models: 3D ridge augmentation using a titanium reinforced PTFE membrane

17 00 Q&A

Dinner Invitation

### Day 2

08 00 Theory: Biomaterial review and selection for GBR

09 30 Live Surgery: Vertical Ridge Augmentation with PTFE membrane

12 00 Q&A

13 00 Lunch

13 30 Theory: Muco-gingival procedures in GBR. Correcting Vestibular Depth, Keratinized Tissue and Gingival Thickness

14 30 Hands-on, animal model: Free Gingival Graft & Strip Gingival Graft

17 00 Theory: Zone Specific Approaches: Esthetic Zone, Posterior Maxilla, Atrophic Maxilla

18 00 Q&A

Dinner Invitation

### Day 3

09 00 Live Surgery: Lateral Ridge Augmentation using PTFE membrane

12 00 Q&A

12 30 Lunch

13 00 Theory: Complications: diagnosis, prevention and management

14 30 Hands-on, animal model: Suturing Skills and Techniques

17 00 Q&A



FOR REGISTRATION

[CLICK  
HERE](#)

OR

scan the code



The Course is limited to 12 participants

In each live surgery, 4 participants will be inside the operating room, the others will be watching a live transmission with audio interaction from the conference room

Course Language: English

For further inquires, send us an email at: [education@samaraniclinic.com](mailto:education@samaraniclinic.com)